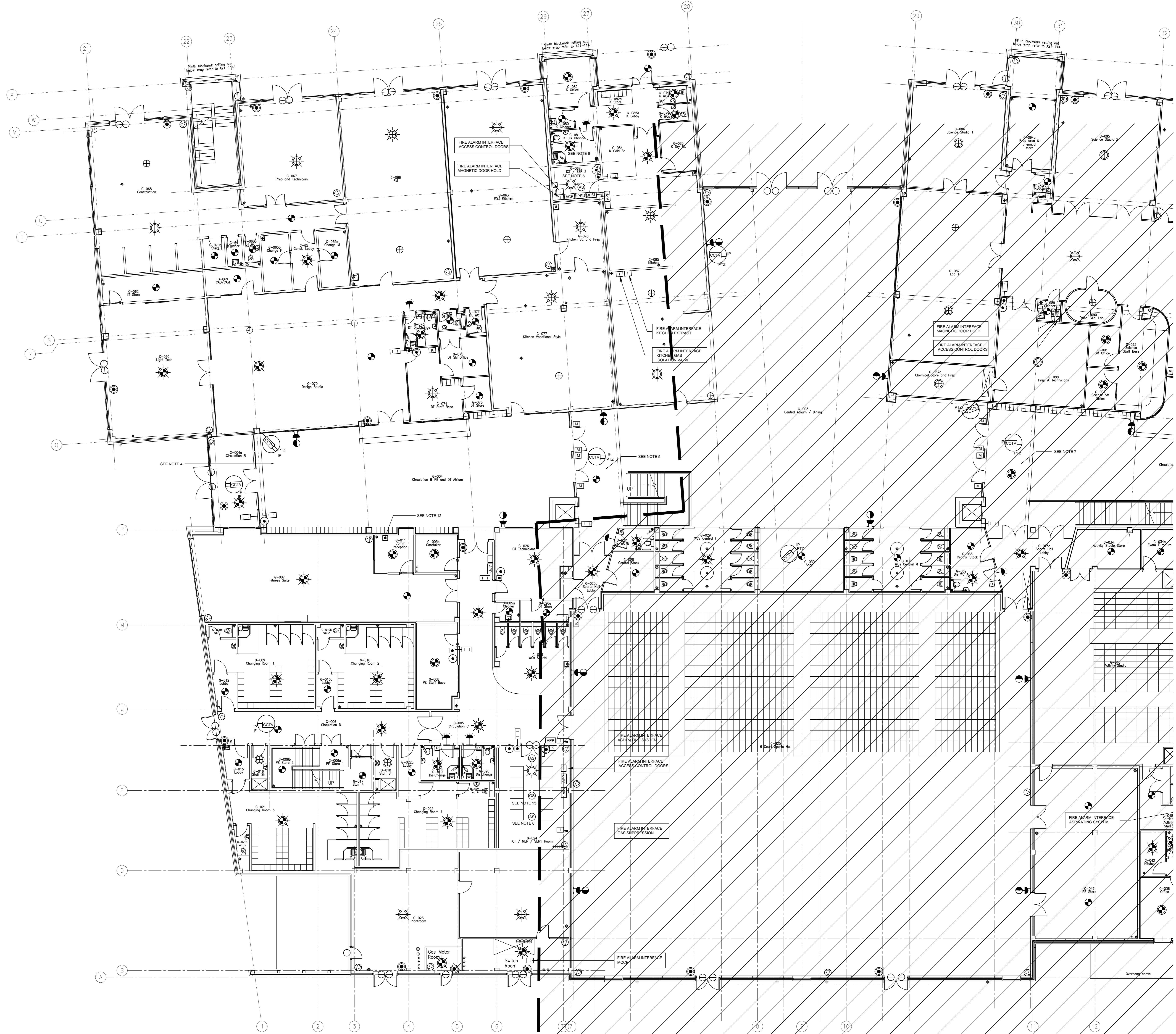


- LEGEND**
- INTRUDER ALARM**
- ACP INTRUDER ALARM PANEL (REQUIRES: POWER, DATA & B.T. LINE)
 - PSU INTRUDER ALARM PSU/IRIO (REQUIRES: POWER)
 - MDO MAGNETIC DOOR HOLD BACK PSU (REQUIRES: POWER)
 - K INTRUDER ALARM KEYPAD
 - DC DOOR / WINDOW CONTACT
 - BS BI SENSOR / DUAL PRESENCE DETECTOR
- CCTV**
- CCTV CAMERA
 - IP IP DENOTES IP CAMERA
 - EX EX DENOTES EXTERNAL RATED CAMERA
 - PTZ PTZ DENOTES PTZ CAMERA
 - F FIXED CAMERA
- ACCESS CONTROL**
- ACP ACCESS CONTROL PANEL (REQUIRES: POWER & DATA)
 - CRD CARD OR BIOMETRIC READER
 - DR DOOR RELEASE
 - EMR EMERGENCY RELEASE / GREEN BREAK GLASS
- FIRE ALARM**
- CSM CEILING MOUNTED SOUNDER BASE/STROBE
 - SD SMOKE DETECTOR - O DENOTES OPTICAL DEVICE
 - SC SMOKE DETECTOR COMPLETE WITH SOUNDER BASE
 - SCS SMOKE DETECTOR COMPLETE WITH SOUNDER BASE/STROBE
 - HT HEAT DETECTOR
 - HCS HEAT DETECTOR COMPLETE WITH SOUNDER BASE
 - HCS S HEAT DETECTOR COMPLETE WITH SOUNDER BASE/STROBE
 - MBS MANUAL BREAK GLASS - PROVIDE WITH PROTECTIVE COVERS
 - SW SOUNDER SW STROBE
 - FAP FIRE ALARM PANEL
 - DRP DISABLED REFUGE PANEL
 - RC REFUGE COMMUNICATOR
 - B BEAM DETECTOR UNIT
 - BR BEAM RECEIVER UNIT
 - I INTERFACE
 - AS ASPIRATING SENSING HEAD
 - GS GAS SUPPRESSION
 - ASP ASPIRATING SYSTEM PANEL
 - MDO MAGNETIC DOOR HOLD BACK DEVICE
- DISABLED ASSISTANCE ALARM**
- PC PULL CHORD
 - ODI OVER DOOR INDICATOR/SOUNDER
 - LR LOCAL RESET UNIT
 - DAP DISABLED ALARM PANEL



- NOTES**
- DO NOT SCALE. WORK TO FIGURED DIMENSIONS ONLY.
 - THIS DRAWING IS COPYRIGHT AND NOT TO BE COPIED WITHOUT WRITTEN PERMISSION.
 - ALL DIMENSIONS ARE IN MILLIMETERS UNLESS OTHERWISE STATED. ALL DIMENSIONS TO BE VERIFIED ON SITE.
 - CENTRAL ALTRAM, CIRCULATION AND CIRCULATION 8 TO BE COVERED BY BEAM DETECTION SYSTEM WITH WALL MOUNTED SOUNDER/STROBES.
 - MOUNTED ON UNDERSIDE OF FIRST FLOOR WALKWAY.
 - ASPIRATING SYSTEM TO BE INSTALLED.
 - FINAL DESIGN OF SYSTEMS TO BE BY SPECIALIST SUB CONTRACTORS.
 - LOOP ALARM SYSTEM TO BE PROVIDED TO ICT EQUIPMENT IN THESE ROOMS.
 - LOCAL ASSISTANCE ALARM ONLY.
 - FINAL DESIGN OF INTRUDER ALARM + CCTV SYSTEMS BY SYSTEMS SPECIALIST.
 - DETAIL DESIGN OF FIRE ALARM SYSTEM BY SYSTEMS SPECIALIST.
 - ENTRANCE DOOR RELEASE.
 - GAS SUPPRESSION SYSTEM TO BE DETAILED SEPARATELY.

Proposed	Client:	HEREFORD ACADEMY NEW BUILDING LAYOUT
Status:	Project:	GROUND FLOOR FIRE ALARM, DISABLED ASSISTANCE SECURITY ACCESS CONTROL & CCTV 1 OF 2
Eng: CP	CAD: AL	
Date: JUNE 10	Scale: A0 @ 1:100	
No. 10986-E67-0001	Rev: 0	