

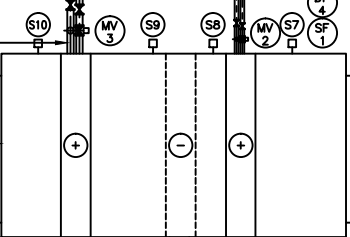
EXISTING 80 INCOMING GAS TO BE DIVERTED THROUGH LOUVRE CONNECTED TO EXISTING INTERNALLY AND EXTERNALLY BELOW GROUND. ALL EXTERNAL STEEL PIPEWORK TO BE DOUBLE WRAPPED IN DENSO TAPE.

STORE

STORE

UP

20 CT HTG F&R DROP TO AHU FROST COIL C/W VALVES AS SCHEMATIC
 32 CT HTG F&R DROP TO AHU HEATER COIL C/W VALVES AS SCHEMATIC
 EXISTING DARTINGTON SUITE AHU - TO BE SERVICED INCLUDING NEW FILTERS

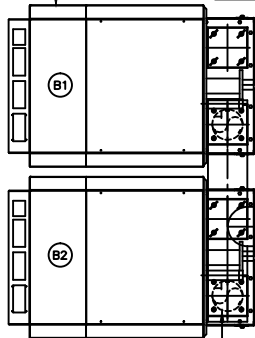


REPOSITIONED EXISTING AC CONDENSER
 40 CT HTG F&R RISE TO H/L

Window

Cellar Door

GAS FIRED CONDENSING BOILERS FLOOR MOUNTED
 WALL MOUNTED MECHANICAL SERVICES CONTROL PANEL
 ELECTRO-THERMAL LINKS 900mm ABOVE BOILER



LITTLE GIANT VCC-20ULS FLOOR MOUNTED BOILER CONDENSATE PUMP DISCHARGE TO H/L/DRAINAGE VIA 20 UPVC

65 HTGF HEADER AT L/L
 65 HTGR BR HEADER AT L/L
 50 HTG F&R 40 GAS TO EACH BOILER C/W VALVES AS SCHEMATIC

200 ID SINGLE WALL FLUE RISE TO ABOVE ROOF LEVEL THRU EXISTING CHIMNEY STACK, CONTRACTOR TO PROVIDE FLUE LINER SUITABLE FOR CONDENSING APPLICATION

150 ID SINGLE WALL FLUE TO EACH BOILER DROP TO L/L CONNECTION
 65 GAS DROP TO L/L
 EX REPOSITIONED SIEGER GAS DETECTION SYSTEM
 EX 65 GAS AT H/L

40 CT HTG F&R RISE TO H/L
 85 VT HTG F&R RISE TO ABOVE, CONNECT TO EXISTING DISTRIBUTION

EX AHU CONDENSER TO BE REPOSITIONED

BOILER COMBUSTION VENTILATION DUCT TO L/L 400x400 GRILLE AT H/L 400x800 GRILLE AT L/L

VT AND CT HEATING TWIN PUMPS WALL MOUNTED

NEW 250 LITRE EXPANSION VESSEL
 EXISTING PRESSURISATION UNIT RELOCATED
 EMERGENCY KNOCK OFF BUTTON

AIR INTAKE DUCT RISE TO ABOVE GROUND EXTERNALLY, WITH LOUVRED GRILLE TO FRONT FACE

BOILER COMBUSTION VENTILATION DUCT RISE TO ABOVE GROUND EXTERNALLY, LOUVRED GRILLE TO FRONT FACE

REFRIG PIPEWORK CUT BACK AND RECONNECTED TO REPOSITIONED CONDENSER

CONDENSER DISCHARGE VENTILATION DUCT RISE TO ABOVE GROUND EXTERNALLY, SPLIT FOR MAKE UP/DISCHARGE AIR

Drawing Title		
BOILER PLANT BASEMENT PART PLAN		
Drawn A.L.	Scale 1:50 @ A1	Checked D.B.
Date	Client Ref.	Approved D.B.

Issue	Date	Description

Job Title	Project No. C10177	Issue
	Plot Ref. CES/C10177/M03	-